

# **U.S. RARE EARTHS: WE HAVE AND WE HAVE NOT**

*Overzealous environmentalism in the form of new and expanded national parks and 70 wilderness areas closing on the order of 10 million acres of the mineral rich California Desert has become an economic and national security threat. Communist China's cartel now controls 97% of the world's Rare Earth Element production.*

## **Donald L. Fife\***

**Professional Geologist CPG 4735  
Tustin, CA 92781-1054  
714 356 7200; Fax 714 731-3745  
donfife@dslextreme.com**

**Once upon a time, in the 1980's, Molycorp's Mountain Pass bastensite ore body was the world's largest producer of Rare Earth Elements (REE's). It's located on Interstate 15, thirty-five miles northeast of Baker, California and fifty-five miles southwest of Las Vegas, Nevada. This Precambrian carbonitite deposit rests at about 4,600 foot elevation in the Clark Mountains. It is part of a 200-mile long north/north-west trending geologic terrain ranging from the Nevada border into Joshua Tree National Park on the south..**

**The Mountain Pass REE deposit location was discovered by three prospectors in 1949. They were exploring under lands open to mineral location under the Mining Law which was signed by President U. S. Grant in 1872 the same year he created Yellowstone National Park.**

**The bastensite ore body is one of the highest grade deposits in the world (12% REE's). This ore contains about 50% Cerium and 30% Lanthanum. Like most RRE deposits it usually contains a small amount of thorium which can give the bastensite a radioactive signature that many (most) REE deposits carry. The concentration of intrusive carbonitite mineralization is about 7 miles long and 3 miles wide and bounded by faults (Woyski, 1980).**

**The three prospectors soon found out they did not qualify for the \$10,000 bonus that the Atomic Energy Commission (AEC) was offering for the discovery of uranium, used for bombs and nuclear energy. However, these prospector's discovery created a high tech revelation making the U.S. the dominant player.**

**Under today's mining regulations, these mining claims would not be valid as there was at the time no market for such a large discovery. The Ninth Circuit Court has ruled that you**

Sc 21  
45.96  
Scandium

Y 39  
88.91  
Yttrium

La



AMERICAN LAND RIGHTS ASSOCIATION  
NATIONAL INHOLDERS ASSOCIATION

DONALD FIFE

donfife@dslextreme.com

Phone: 714-356-7200

Fax: 714-731-3745

PO Box 400  
Battle Ground, WA 98604  
PHONE: 360-387-0087  
FAX: 360-837-2373  
ccushman@landrights.org

507 Seward Sq  
Washington, DC 200  
PHONE: 202-210-2000  
FAX: 202-543-7100  
landrightsne@aol.com

Pr 59  
140.91  
Praseodymium

Nd 60  
144.24  
Neodymium

Pm 61  
144.91  
Promethium



Sm 62  
150.36  
Samarium

Eu 63  
151.96  
Europium

Gd 64  
157.25  
Gadolinium

Tb 65  
158.93  
Terbium

Dy 66  
174.97  
Dysprosium

Ho 67  
164.93  
Holmium

Ho 67  
164.93  
Holmium

Er 68  
167.26  
Erbium

Tm 69  
168.93  
Thulium

Yb 70  
173.05  
Ytterbium

Lu 71  
174.97  
Lutetium

THERE IS NO

# SUBSTITUTE

CHINA USES ITS NEAR MONOPOLY ON STRATEGIC METALS KNOWN AS ~~EARLY~~ ~~FOUND~~ IN EVERYTHING FROM PHONES TO DRONES, AS A POLITICAL WEAPON. A REOPENED AMERICAN NINE WAY BREAK THE STRANGLEHOLD.

**Even though low level radon was natural and had been known by the company and monitored by all the government agencies they had permits from for many years, EPA took an extreme position declaring Molycorp a “radiation handler” and issued draconian fines of hundreds of thousands of dollars. A SWAT Team from U.S. Fish and Wildlife raided the Mine and held the employees hostage while they seized the companies records. Molycorp’s lawyers were barred from entering the plant site to counsel their employees. An “endangered desert tortoise” carapace (shell) was found, even though there was no evidence that it didn’t die of anything other than natural causes, Molycorp was fined 50,000 dollars!**

**A regulatory nightmare evolved with 29 local, state and federal agencies set up field offices to “solve” the fresh water spill. Molycorp offered to clean up or scoop up the wet alluvium, but this was forbidden. Gridlock ensued as every agency’s regulations conflicted with every other agency’s regulations. It was like an old gold rush camp with every agency expecting to mine Molycorp with draconian fines.**

**America premier source of strategic REE elements was regulated out of business and 300 employees lost their jobs. For almost 15 years America became dependant on the communist Chinese cartel.**

**A documentary “Desert Storm Troopers” by American Investigator out of Washington D.C. exposed this regulatory nightmare to several million viewers on television. It was too late to save the Mountain Pass Rare Earth Mine, but it did substantially reduce Molycorp’s fines.**

**Because of these closures and draconian regulations, Communist China, potentially a military adversary, now controls ninety-seven per cent (97%) of the world’s production of REE’s. We have made them a cartel. As a result they have raised prices dramatically in recent years.**

**As reported by the Associated Press (2013), China raised the price of Neodymium, used to make Prius electric motors, from \$15 per kilogram to \$500.00. Communist Chinese dysprosium, used on lasers, has gone from \$114 per kilogram to \$2,830.00.**

**The California Desert “Protection” Act (S-21) was sponsored by Senators Feinstein and Boxer, and This Act closed about 10 million acres of the California Desert to mineral and energy exploration and development in the area surrounding the Mountain Pass Mine. It also closed the most promising geologic terrain for future RRE’s.**

**Recently a REE deposit was discovered in Precambrian Joshua Tree terrain in Music Valley. Prior to the California Desert Protection Act (21), it was outside the park (Evans, J.R, 1982) but was apparently annexed into the expanded Joshua Tree National Park prevent mining it.**

**Mineral reports on Joshua Tree National Monument, now Joshua Tree National Park have been suppressed. Saul, R, Gray, C and Evans, J.R (circa 1961) Mines and Mineral**

can't have too much of a good thing (excess reserves!) or the government will take it from you.

Twenty years ago warning was given (*Geology and Mineral Wealth of the California Transverse Ranges*, Preface p. vii ) against locking away so much of the California desert in new national park sand wilderness areas. At that time, REEs were already a strategic element for high tech and military use. They are now immensely more important. No modern high-tech industry or military can credibly exist without REE's.

Rare Earth Elements are the group of 15 elements known as *lanthanides* with atomic numbers 57 through 71. They form the top line of the bottom block of the periodic table. Samarium, atomic number 62, and yttrium, atomic number 39 are also considered as REE's. These elements give unique catalytic, magnetic, and luminescent properties. They have been entered in the production of modern military hardware and electronic systems.

Neodymium is a key ingredient in neodymium boron iron super-magnets. These magnets can reduce by 50% the weight of magnets used in electric motors and "pollution-free" electric vehicles. RREs are critical in the manufacture of wind turbine and hybrid electric vehicles and laser technology including "smart bombs." This makes REE's critical to the high-tech revolution and to national defense.

They are essential to the manufacture of many other high-tech products and weapons, such as MRI scanners, cell phones, the red color in televisions, and lasers and are used in the replacement of platinum in catalytic converters and in cracking petroleum into gasoline and other products.

*According to Gene Dewey, former President of MolyCorp, the element lanthanum can be used to increase energy efficiency of lighting by up to 50%. If all lights in America were converted to this technology, half of all energy consumed in lighting could be saved.*

In the 1990's Communist China flooded the world with cheap RRE's from new discoveries in Mongolia undercutting Mountain Pass, the only source in the United States. At the same time Senators Feinstein and Boxer's California Desert Protections Act (S-21) surrounded the Mountain Pass Mine with a 1.4 million acre defacto National Park, the "Mojave National Preserve and numerous wilderness areas, shutting down new exploration and existing mines in one of the most mineral rich regions of North America.

In September 1996 while MolyCorp was flushing out their tailing pipeline with fresh water to an evaporation pond in a dry lake several miles through the new Mojave Preserve on the Nevada border, the pipeline broke spilling more than 800,000 gallons of fresh water with some slightly radioactive tailings. The wet alluvium was derived from the same Precambrian bedrock where the naturally low level radioactive bedrock is an order or two above normal back ground occurrences. MolyCorp reported this spill and volunteered to scoop up the wet alluvial soil and transfer it to an appropriate dump in drums.

**Deposits of Riverside County covering the Joshua Tree National Monument was “lost” by the State Printing Office and never printed. (Evans recently retired from BLM, found the “lost” Riverside County Report in BLM Sacramento archives).**

**In 1950 Congress commissioned the U.S. Geological Survey and U.S. Bureau Mines to inventory the mineral potential of the remaining 552,000 acre that it reduced from 825,000 acres to remove the Eagle Mountain Iron Deposit and several gold mining districts from the monument. I found this report in the Sutland, Maryland Annex of the National Archives, however it was sealed and the public cannot see it.**

**In 1957 the Atomic Energy Commission produced a report on the potential of radioactive minerals in the remaining 552,000 acres of the monument. This probably relates to the rare earth thorium bearing Joshua Tree Terrain as reported by Powell in Ruff, R, and others, 1982). This terrain makes up a large percentage of the Park’s bedrock. Recently a similar xenotime bearing REE deposit named “Thor” a few miles north of Mountain Pass has on the Nevada-California border has been reported by Elissa Resources.**

**Colorado River excess flood water stored by the Metropolitan Water District (MWD) in aquifers outside the National Park but derived from Joshua Tree National Park bedrock were recently tapped for distribution to southern California. These waters were found to be “too radioactive for human consumption.” All this would suggest that the Precambrian Joshua Tree terrain inside Joshua Tree National Park is prime exploration area for RREs.**

**The “bottom line” is that the California Desert has the real potential to make the USA independent of Chinese or any other foreign source of RRE’s. However, it has become a criminal act to explore our most favorable geologic terrain for discovery and development of new or existing deposits. Despite the 1872 Mining Law, the legal right to exploit deposits for the benefit of citizens and our country has been taken from us. One cannot legally explore a national park, national monument, or wilderness to find new RRE deposits. We have the resources, but we do not have access to them.**

**Even through it takes on the order of 10 to 20 years to permit a new mine, it took more than ten years to reopen an existing mine! Molycorp’s Phoenix Project is underway revamping the mining, environmental and processing facilities at Mountain Pass. As of January 2013 they are producing on the order of 19,000 metric tons a year. This is thought to be about 3% of the world’s Production. Locking up the energy and mineral rich California Desert has deprived America of trillions of dollars in lost economic opportunity and now has become a threat to national security.**

**In the 1970’s the California Desert was declared a United Nations Man in the Biosphere Reserve This is part of a United Nations stealth program connected to the Wildland Project to turn 50% of the USA into interconnecting wilderness areas and human exclusion zones and reduce our population up to 50% over the next century( [www.takingliberty.us](http://www.takingliberty.us)) . The Wildlands Project was part of the Biodiversity treaty that Senator Mitchell (D-Maine) killed during the Clinton Administration. This philosophy appears to be a driving force in locking up our energy and mineral resources**

## **Selected Bibliolatrty**

**Ruff, R, Unruh, M. and Bogseth, P. , 1982. Mineral Potential of the Eastern Transverse Ranges in Fife, D.L. and Minch, J.A. (Editors), Geology and Mineral Wealth of the California Transverse Ranges, South Coast Geological Society, Santa Ana, California**

**Fife, D.L. and Minch, J.A. 1982. Observations on the Economic Geology of the California Transverse Ranges (Preface) in Geology and Mineral Wealth of the California Transverse Ranges, South Coast Geological Society, Santa Ana, California p. iiv**

**Johnson, Steve, 1998. Molycorp Undate. Baker Valley News, Baker, California Sept. 8, 1998.**

**Reynolds, Timothy 2013. There is no substitute. Popular Mechanics.com January 2013 6 p.**

**Fife, Donald, 2001. Greens Force Strategic Mine Out Of Business. Communist China now controls supply of rare minerals, Media Release, National Association of Mining Districts, Washington D.C, 2p**

**Farnahn, Alan, 2013. Old Mine Tailings: New Mother Lode For Rare Elements, ABC NEWS RELEASE 8/3/13**

**Hedrick, James B., 1995. Thorium, U.S. Geological Survey, Reston, Virginia 20192 Annual Review (Fax Back (703) 648-4999 [jhedrick@usgs.gov](mailto:jhedrick@usgs.gov) pp 4.**

**Arnold. Ron, 2013. Why won't President Osama let the Defense Department face the rare earth security risk? [www. conservativeactionalerts.com](http://www.conservativeactionalerts.com)**

**Evans, James R., 1982. Xenotime Mineralization (yttrium) in the southern Music Valley Area, Riverside County, California in Fife, D .L. and Minch, J. A. (Editors) Geology and Mineral Wealth of the California Transverse Ranges, South Coast Geogical Society, Santa Ana, California pp. 500-505.**

**Sharrer, William L., 2000. Molycorp Mt. Pass Mine 30-Year Plan, Baker Valley News, Baker, California pp 1-2**

**Hsu, Tiffany, 2011. High-tech's ace in the hole. California mine could ease U.S. reliance on China for rare earth elements. Los Angeles Times, Business Section Sunday February 20, 2011, pp. B1 and B-7.**

**Warhol, Warren, 1980. Molycorp's Mountain Pass Operations. in Fife, D. L. and Brown, .R. (Editors) Geology and Mineral Wealth of the California Desert, South oast Geological Society, Santa Ana, California. pp 359-366.**

**Woyski, Margaret S., 1980. Petrology of the Mountain Pass Carbonitite Complex—A Review, in Fife, D. L. and Brown, A.R. (Editors) Geology and Mineral Wealth of the California Desert, South Coast geological Society, Santa Ana, California pp. 367-378.**

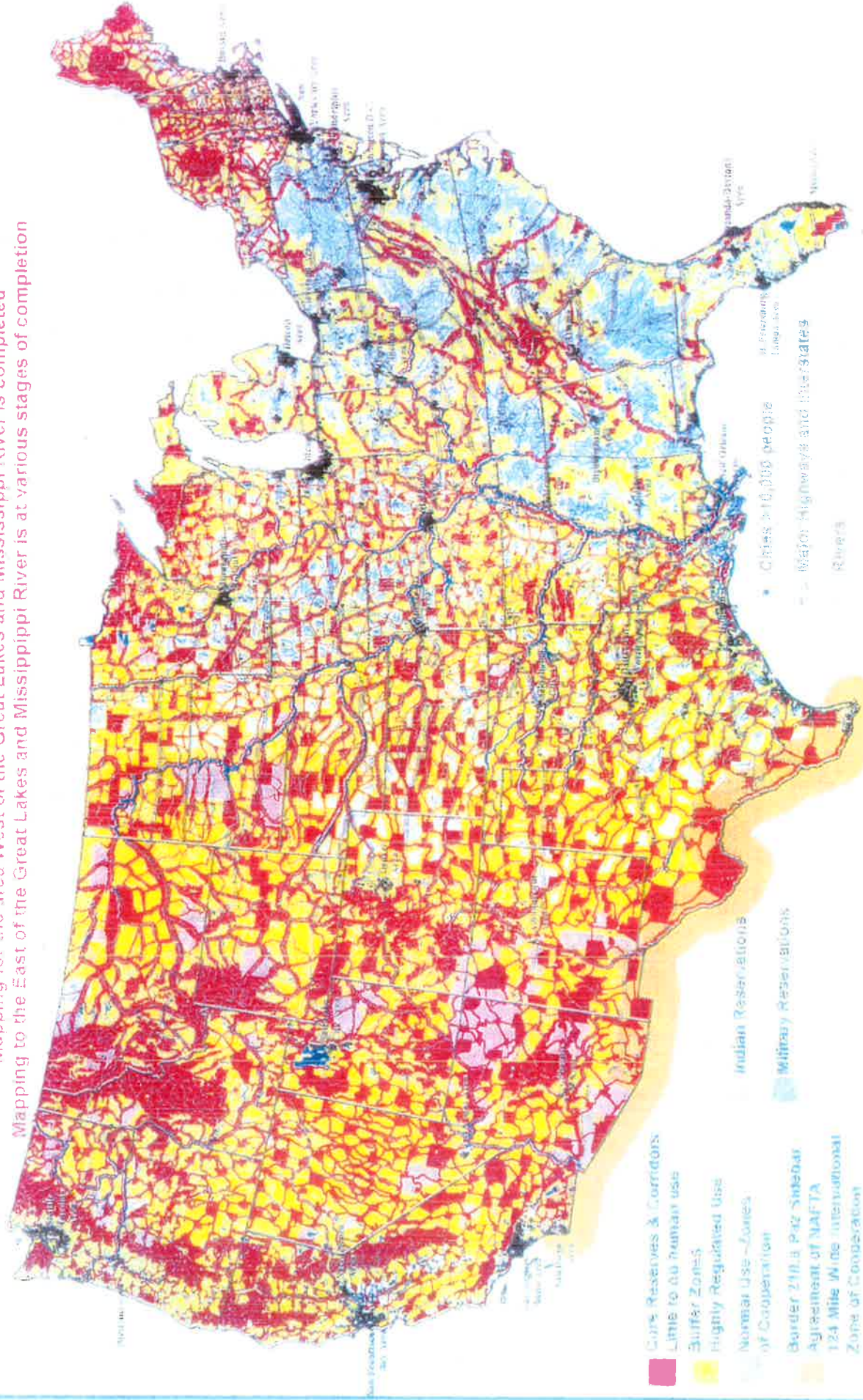
---

**\*Donald L. Fife is a consulting economic, engineering, mining and environmental Geologist in southern California with more than 20 years experience in academia, government, and private practice. In the 1980's he was appointed advisor to Interior Secretaries Watt, Clark, Hodel and Lujan for geology, energy and minerals for the 25 million acre California Desert Conservation Area. Also he served as ad hoc adviser to Allen Hill, Chairman of Environmental Quality (NEPA) for the Reagan-Bush White House. He has testified numerous times before the U.S. House and Senate Interior Committees on Energy and Natural Resources. He is author of *Environmental Hysteria Can Kill*, the story of how EPA forced NASA to remove non-carcinogenic chrysotile asbestos from the "O" rings of the Space shuttle resulting in the failure of the Challenger.**

# Simulated Reserve and Corridor System to Protect Biodiversity

As Mandated by the Convention on Biological Diversity, The Wildlands Project, UN and US Man and Biosphere Program, and Various UN, US Heritage Programs, and NAFTA

Mapping for the area West of the Great Lakes and Mississippi River is completed  
Mapping to the East of the Great Lakes and Mississippi River is at various stages of completion





# The Wildland Project: A Frightening Vision Of The Future

by Karen Little,  
Durango, Colorado

**W**hat exactly is the vision that environmentalist leaders have for America's public AND PRIVATE lands? Their plan to preserve America's Heritage "for the children" is The Wildlands Project, a plan which is intended to help implement the Convention on Biological Diversity (a UN treaty not ratified by the Senate). Upon first reading about this "plan" devised by David Foreman (co-founder and long-time leader of ecoterrist organization Earth First) and Dr. Michael Soule (co-founder of the Society for Conservation Biology), it would seem that one could easily disregard it as a "creative, and horrifying vision" of a few over-the-edge environmental extremists. However, in light of the many followers of "Deep Ecology" placed in influential positions in the present administration, and in light of the President's several monument declarations, it is becoming clear that The Wildlands Project is in fact being implemented.

It is the "wrenching transformation of society" called for by Al Gore in the final chapter of *Earth in the Balance*. Fifty per cent (50%! of the land mass on the North American Continent would be set aside as "wild land" dedicated to the preservation of biological diversity and allowing very little, if any,

human use. The project plans to do this with a system of "core reserves" created from public forest lands and parks and with "buffers" created from private land adjoining the cores. "Corridors," consisting of public and private lands mostly along rivers and wildlife migration routes, will connect the huge "cores" and "buffers." Keep in mind that wildlife habitat and biodiversity are the primary goals, so little—if any—human activity will be allowed. Large "roadless" areas are needed to protect and restore ecosystems and to expand the system of core reserves, so roads and trails need to be ripped out. Of particular interest to readers is that according to maps published by supporters of the Wildlands Project, virtually ALL of the area we now call home is either in or surrounded by "core reserve" or "buffer" zones.

So where CAN we humans go according to The Wildlands Project? Humans shall be relegated to what we now call large metropolitan areas, but what The Wildlands Project calls "Normal Use-Zone of Cooperation." There, the humans will get around on the public transportation system and live in multi-

level "sustainable" housing. We may be able to enter the "buffer zones" on occasion, but use will be highly regulated.

When will this happen? It doesn't take a mental giant to connect the dots and see that it is happening right now. The main target is the West.

One has but to look at how much land has been set aside, without Congressional approval

for Wilderness designation... How many ranchers have been or will be squeezed to sell because of the endangered species act, EPA regulations, or BLM Policies? What is the goal of Al Gore's "urban sprawl" campaign and the war against SUV's? What about the CARA bill? pending in Congress to use billions of our private land which would take the land off the tax rolls, increase our taxes, and create still more Wilderness? All these things point to an implementation of the Wildlands Project, not in the future, but now.

Why isn't there open discussion about this "creative" master plan? Evidently, Green advocacy leaders and organizations such as Dave Foreman and Conservation Administration appointees such as Dombek and Babbit, wealthy and powerful individuals and trusts such as Ted Turner and the Pew Charitable Trust, and the President and Vice President, do not feel that the public is ready or capable of digesting and accepting it. It may not be mainstreamed for discussion, but those listed above are investing millions of dollars in

## “According to maps published by supporters of the Wildlands Project, virtually ALL of the area we now call home is either in or surrounded by “core reserve” or ‘buffer’ zones.”

Why isn't there open discussion about this "creative" master plan? Evidently, Green advocacy leaders and organizations such as Dave Foreman and Conservation Administration appointees such as Dombek and Babbit, wealthy and powerful individuals and trusts such as Ted Turner and the Pew Charitable Trust, and the President and Vice President, do not feel that the public is ready or capable of digesting and accepting it. It may not be mainstreamed for discussion, but those listed above are investing millions of dollars in

support of the project... "a wrenching transformation of society," indeed!

Maybe it's time to mainstream the discussion, for the American people to become "fully aware of its implications." In the interest of fairness and the public's right to know, all present and future landowners and recreationists are STRONGLY urged to visit the Wildlands Project websites! to see the "vision" that Pearson, his fellow environmentalist leaders, and the present administration have for America. Read also Al Gore's book, *Earth in the Balance*, most notably the last chapter. If you are dedicated and willing to make a visit to the local library, *The High Cost of Biodiversity*, is well worth reading (Science. Vol.260. 25 June, 1993).

Everyone in America should be informed of The Wildlands Project in order to consider all of the options and to decide which of these "creative and horrifying" visions, if either, we wish to avidly support.

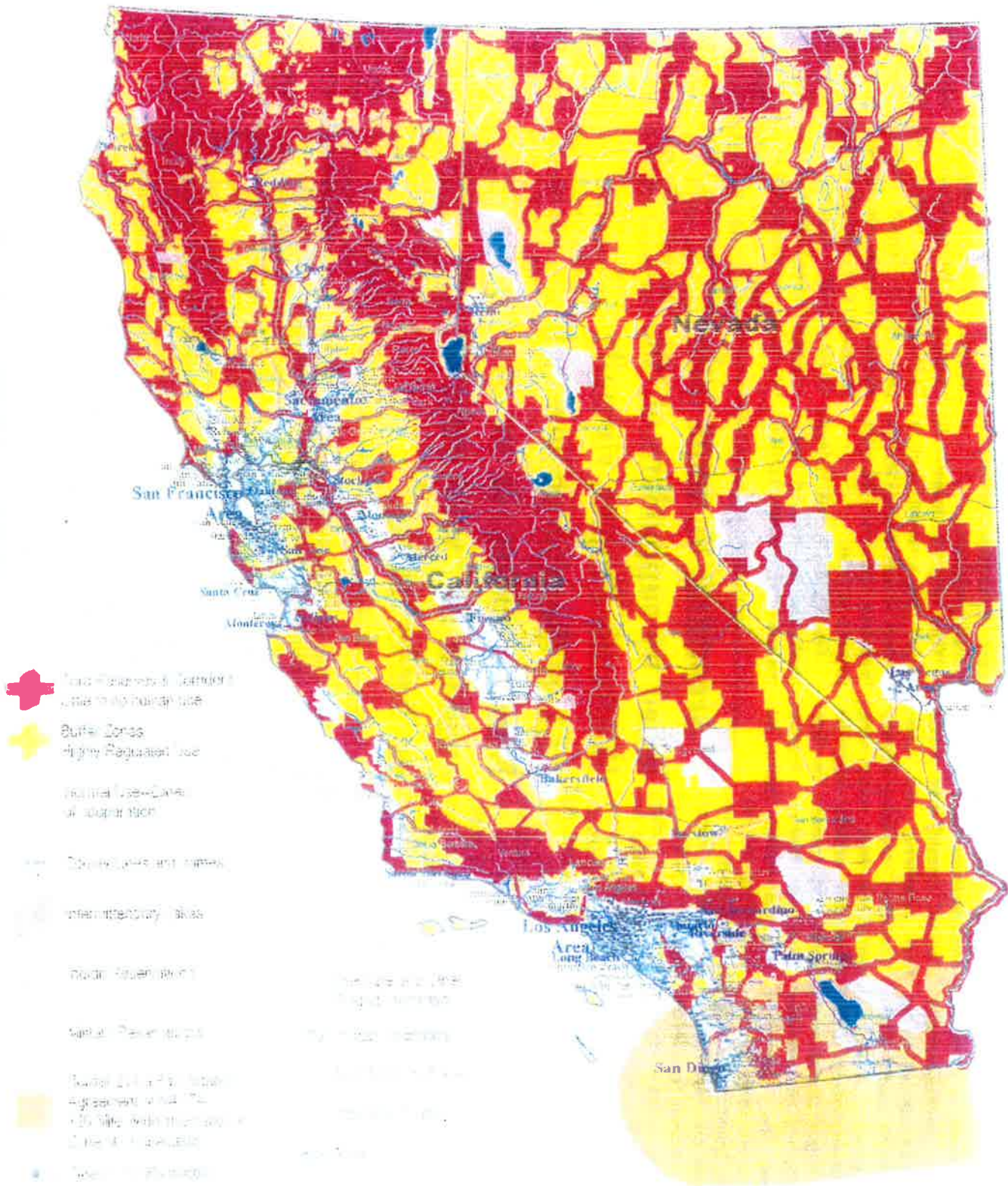
### WEBSITE REFERENCES

1. <http://www.wildlandsproject.org/index.shtml>
2. <http://www.america-collins.com/biomaps.htm>
3. <http://www.alltexas.net/txnews2.html>
4. <http://www.cato.org/pub/pas/pa-363es.html>
5. <http://www.landrights.org>

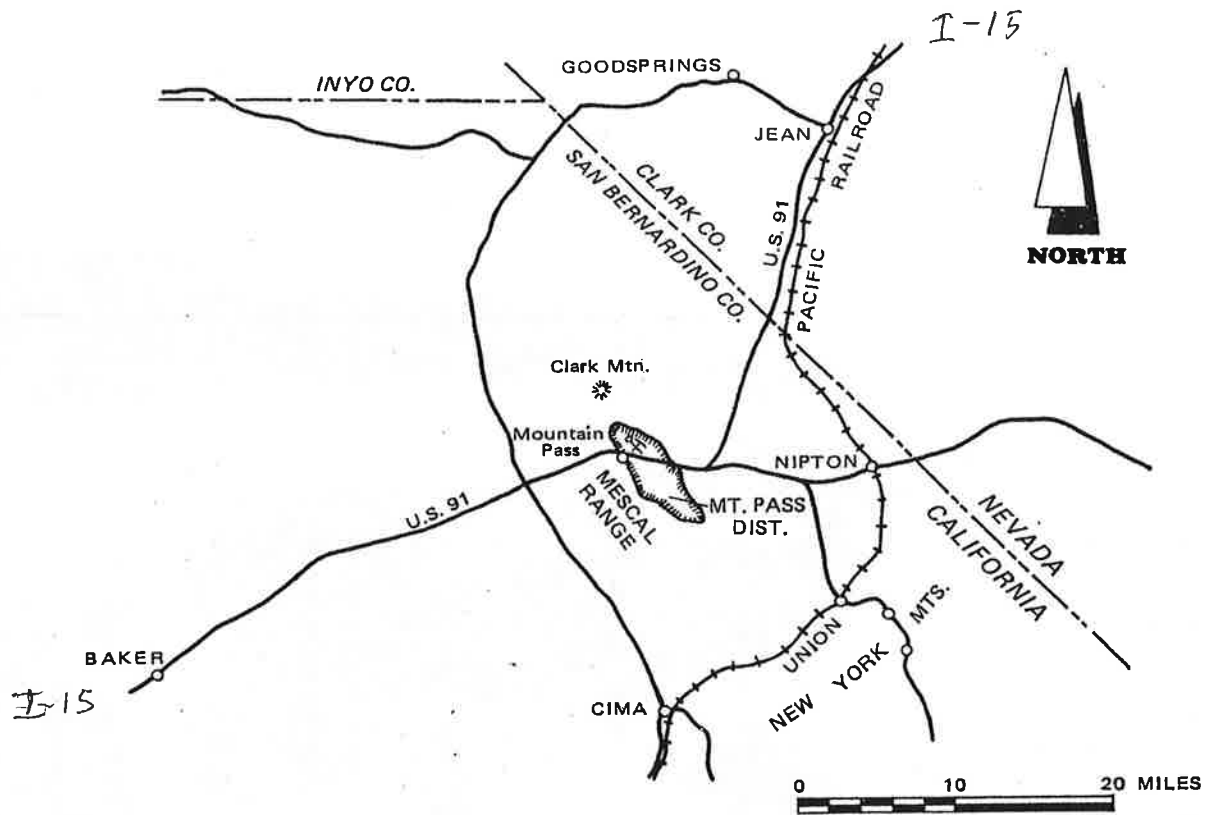
—The author of this article may be contacted for questions and/or comments via email at <wkspecial@yahoo.com>.

# Simulated Reserve and Corridor System To Protect Biodiversity

As Mandated by the Convention on Biological Diversity, The Wildlands Project  
UN and US Man and Biosphere Program and NAFTA' Border 21



INDEX MAP



MOUNTAIN PASS BASTNAESITE ORE DEPOSIT  
 DIAGRAMMATIC CROSS SECTION - VIEW LOOKING NORTH

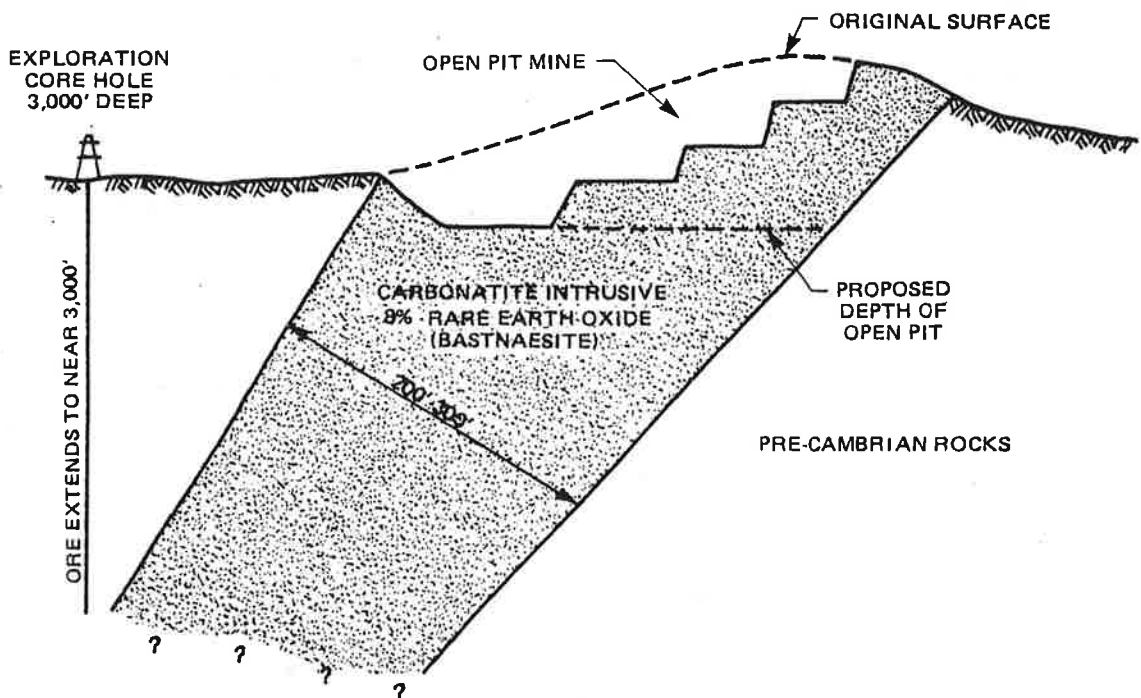


FIGURE 1

## MOUNTAIN PASS



The average concentration of rare earths in the mine at Mountain Pass, Calif., is 8.24 percent. Concentrations at China's largest mine average 2 to 4 percent.